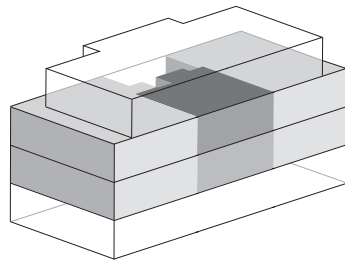
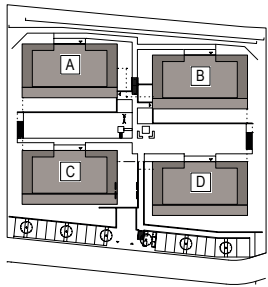


# SIXSENSES BERINGEN



## 1. OBERGESCHOSS / 2. OBERGESCHOSS 2,5 Zimmer-Wohnung

Haus A 54,2 m<sup>2</sup>  
Haus B 56,6 m<sup>2</sup>  
Haus C 56,4 m<sup>2</sup>  
Haus D 56,4 m<sup>2</sup>

